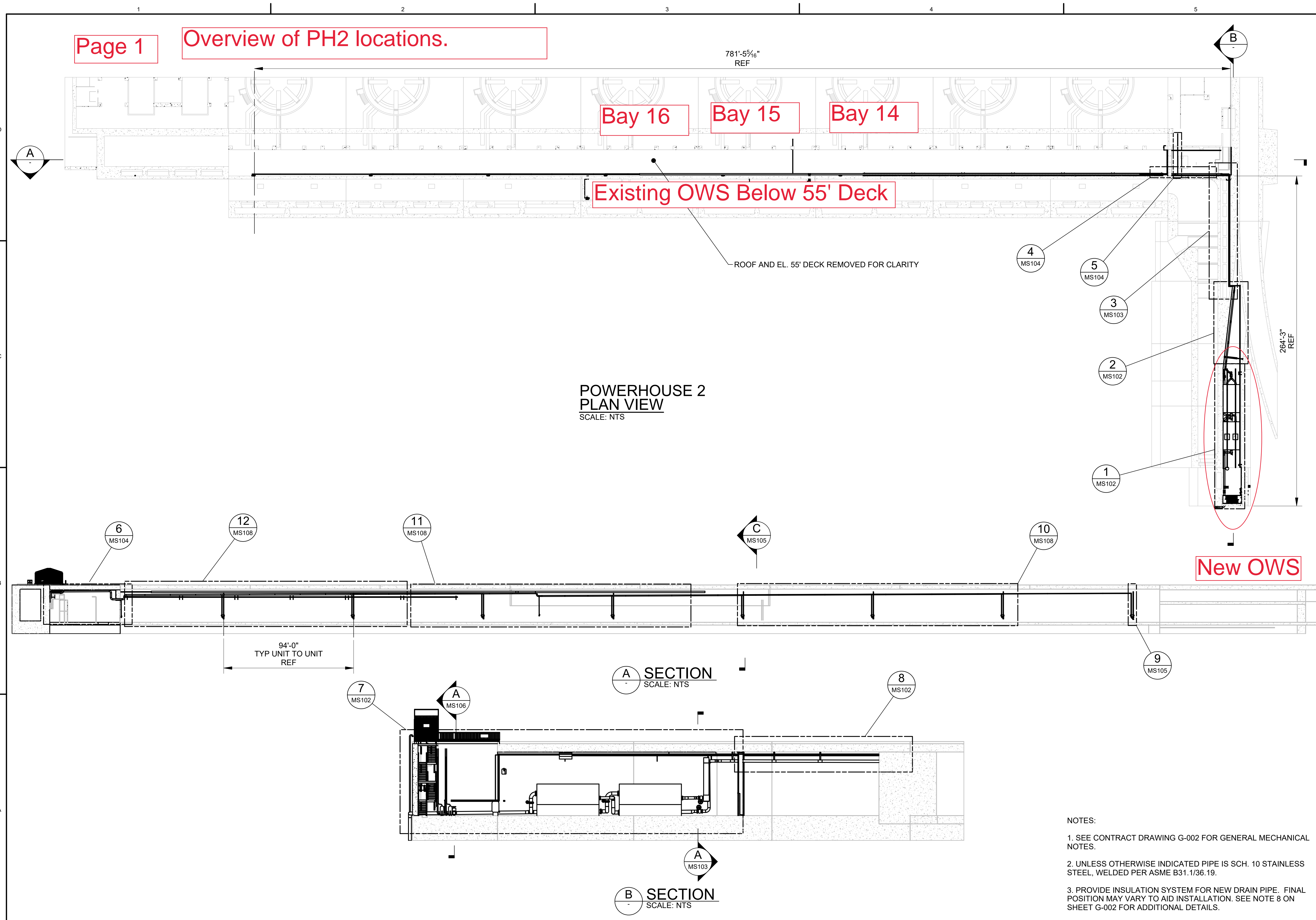


US Army Corps of Engineers  
PORTLAND DISTRICT

DATE	APPR.

ADVERTISE

DESCRIPTION	MARK



POWERHOUSE 2  
PLAN VIEW  
SCALE: NTS

A SECTION  
SCALE: NTS

B SECTION  
SCALE: NTS

- NOTES:
1. SEE CONTRACT DRAWING G-002 FOR GENERAL MECHANICAL NOTES.
  2. UNLESS OTHERWISE INDICATED PIPE IS SCH. 10 STAINLESS STEEL, WELDED PER ASME B31.1/36.19.
  3. PROVIDE INSULATION SYSTEM FOR NEW DRAIN PIPE. FINAL POSITION MAY VARY TO AID INSTALLATION. SEE NOTE 8 ON SHEET G-002 FOR ADDITIONAL DETAILS.

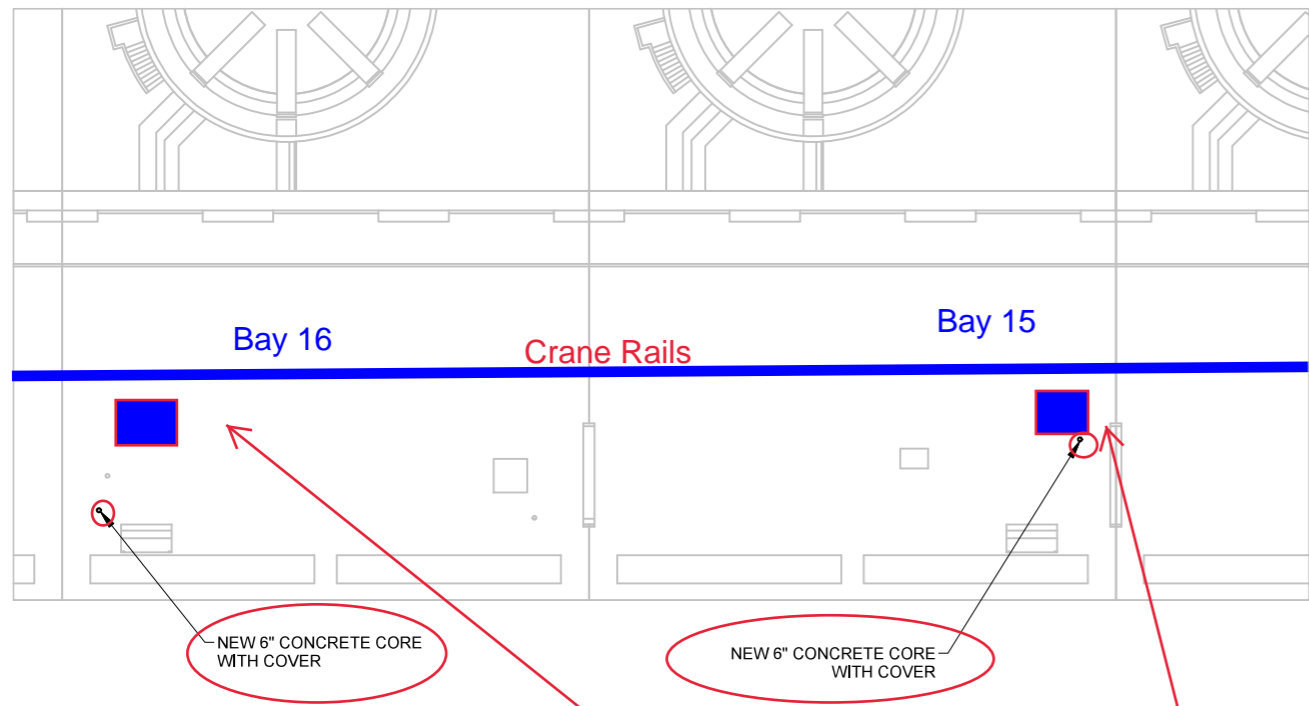
DESIGNED BY: ALAN STORKE P.E.	DATE: 6/28/2018
CHECKED BY: GEOFFREY GREGG	DESIGNED BY: ALAN STORKE P.E.
SUBMITTED BY: BRIAN BELL P.E.	CONTRACT NO.:
PLOT SCALE: 1:1	PLOT DATE: 7/26/2018
FILE NAME: BDP-1_125_MS101XXX.DWG	DRAWING NUMBER:
ANSI D	

U.S. ARMY CORPS OF ENGINEERS  
PORTLAND DISTRICT  
PORTLAND, OREGON

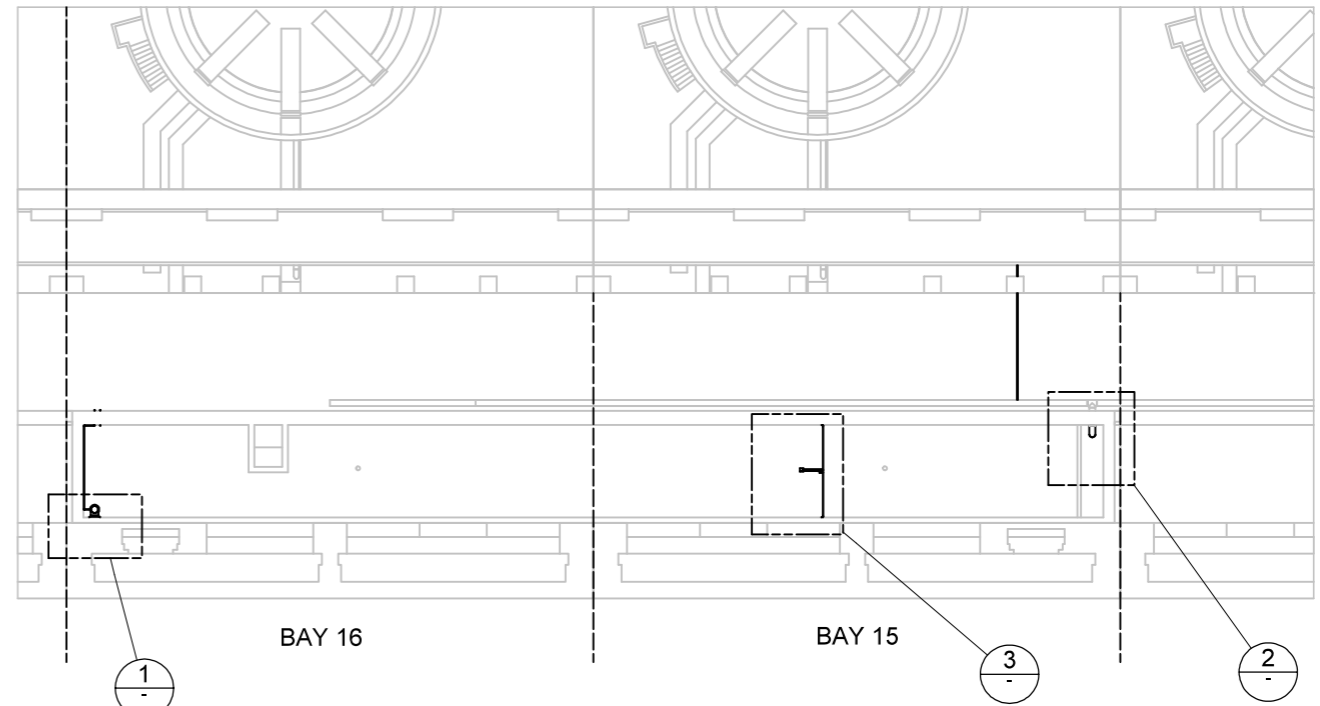
BONNEVILLE LOCK AND DAM  
SECOND POWERHOUSE  
OIL-WATER SEPARATOR  
HEAD COVER OWS PIPING  
PLAN AND VIEWS 1

SHEET IDENTIFICATION  
MS101

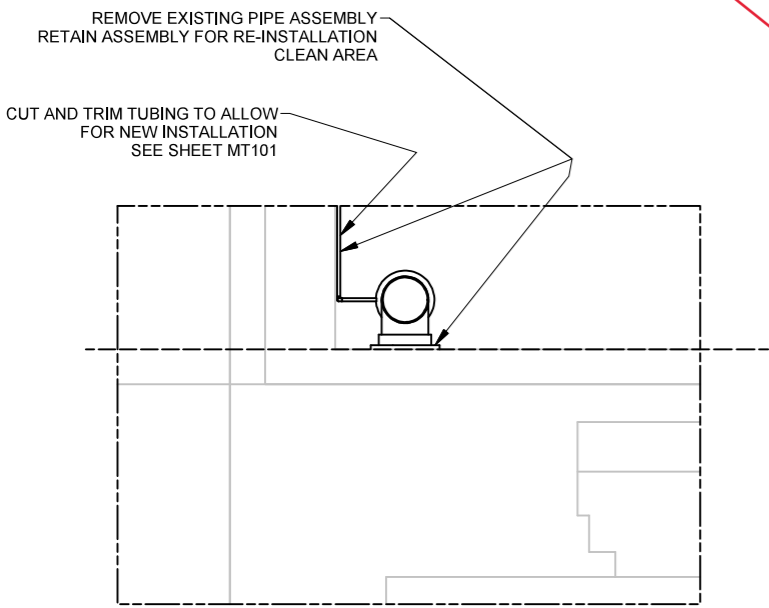
PH2 Location of Two 6" Core Drills at Bay 15 and Bay 16



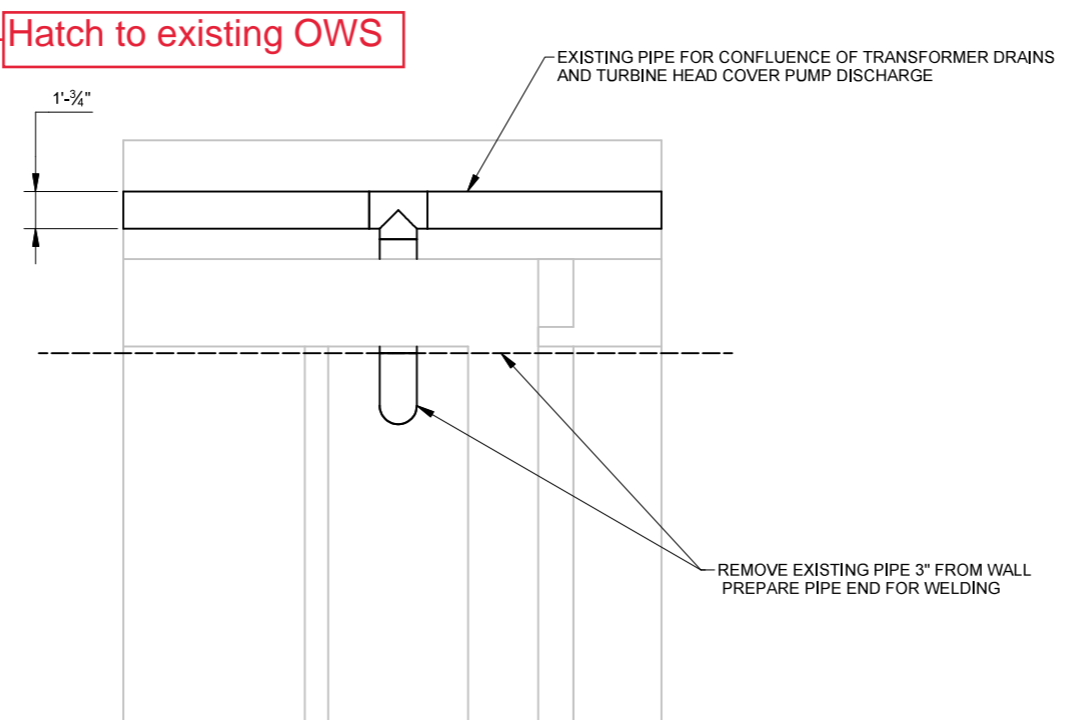
EL. 55' DECK AT POWERHOUSE 2  
PLAN VIEW  
SCALE: NTS



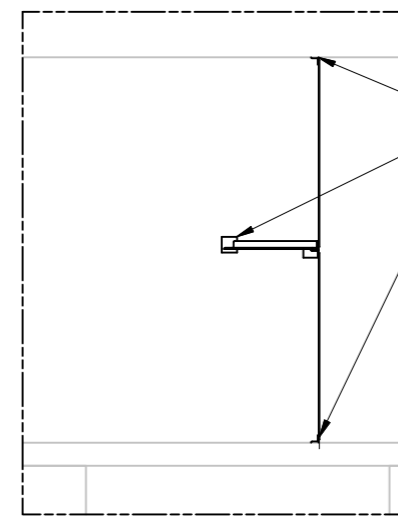
EXISTING OWS AT B2  
PLAN VIEW  
SCALE: NTS  
DECK NOT SHOWN



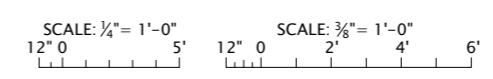
1 DETAIL  
SCALE: 3/8"=1'-0"



2 DETAIL  
SCALE: 3/8"=1'-0"



3 DETAIL  
SCALE: 1/4"=1'-0"



NOTES:  
1. SEE CONTRACT DRAWING G-002 FOR GENERAL MECHANICAL NOTES.

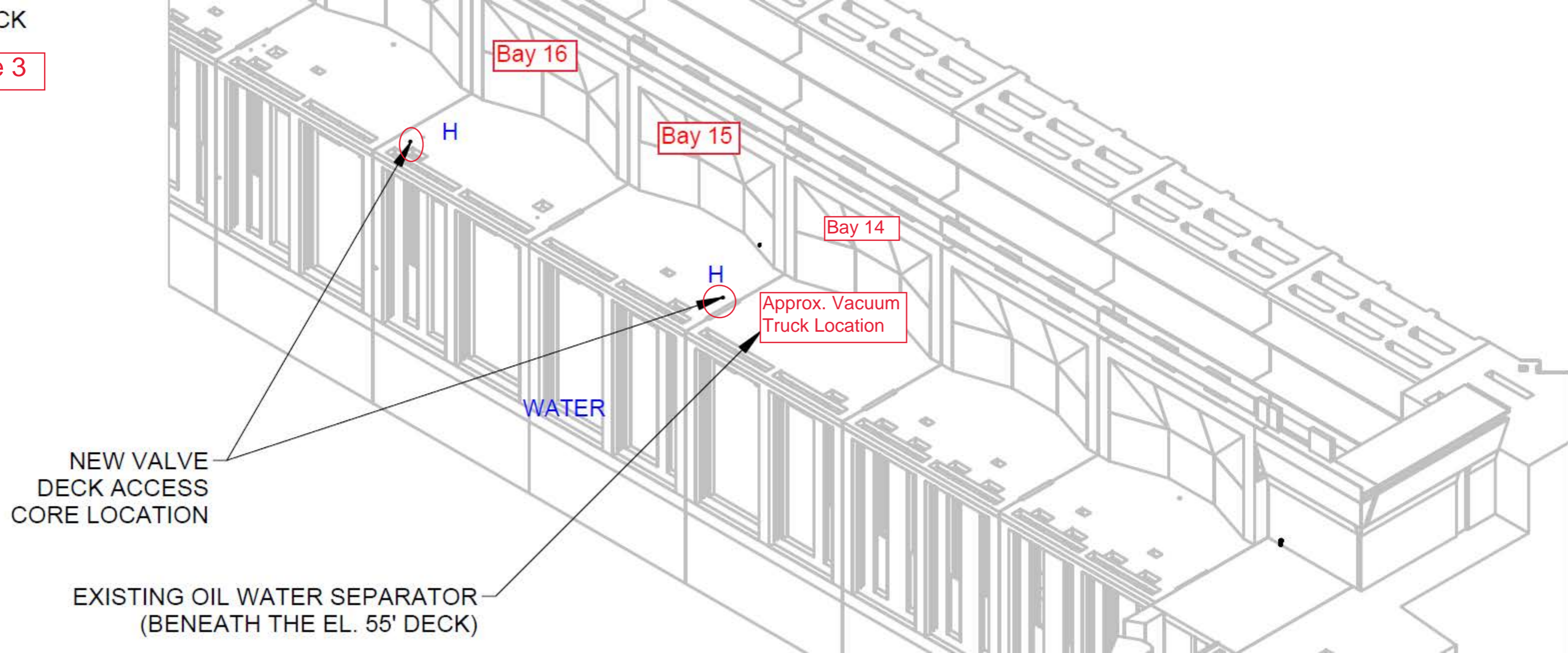


DATE	APPR.
7/26/2018	
SOLICITATION NO.	DESCRIPTION
W1917N18R007	ADVERTISE
CONTRACT NO.	MARK

DESIGNED BY:	DATE:
ALAN STORKE P.E.	7/26/2018
DRAWN BY:	SOLICITATION NO.:
G2E2C8JF	W1917N18R007
SUBMITTED BY:	CONTRACT NO.:
BRIAN BELL P.E.	
PLOT SCALE:	DRAWING NUMBER:
1/32"=1'-0"	BDP-112E-MD101XXX.DWG
FILE NAME:	ANSI D
BDP-112E-MD101XXX.DWG	

BONNEVILLE LOCK AND DAM  
SECOND POWERHOUSE  
OIL-WATER SEPARATOR  
MECHANICAL DEMOLITION  
TRANSFORMER OWS

SHEET IDENTIFICATION  
MD101



Bay 16

Bay 15

Bay 14

Approx. Vacuum Truck Location

H

H

WATER

NEW VALVE DECK ACCESS CORE LOCATION

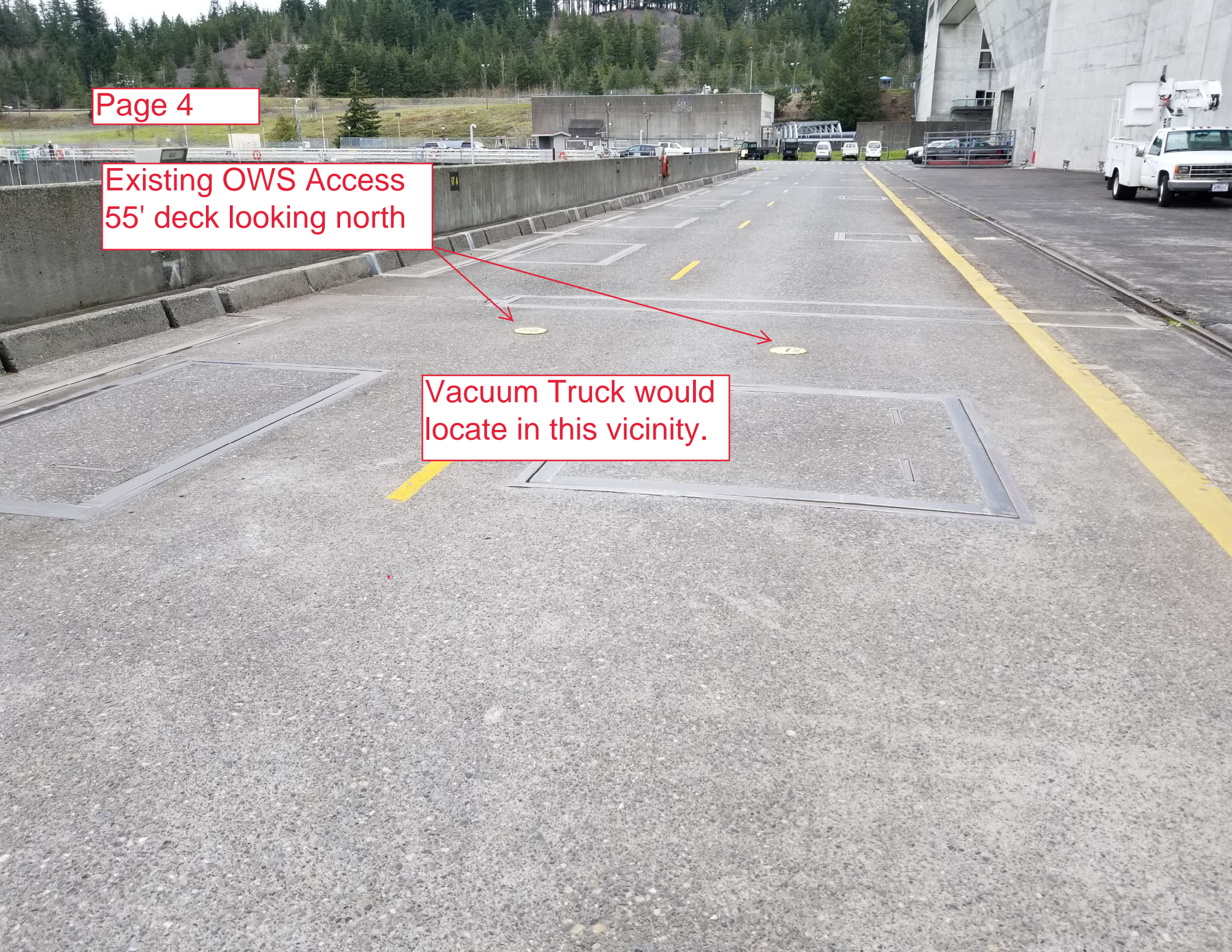
EXISTING OIL WATER SEPARATOR (BENEATH THE EL. 55' DECK)



Page 4

Existing OWS Access  
55' deck looking north

Vacuum Truck would  
locate in this vicinity.





Page 5

Existing OWS Access  
55' deck looking south

Vacuum Truck would  
locate in this vicinity.

